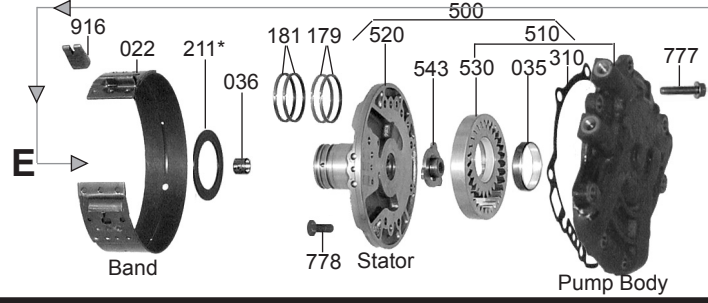
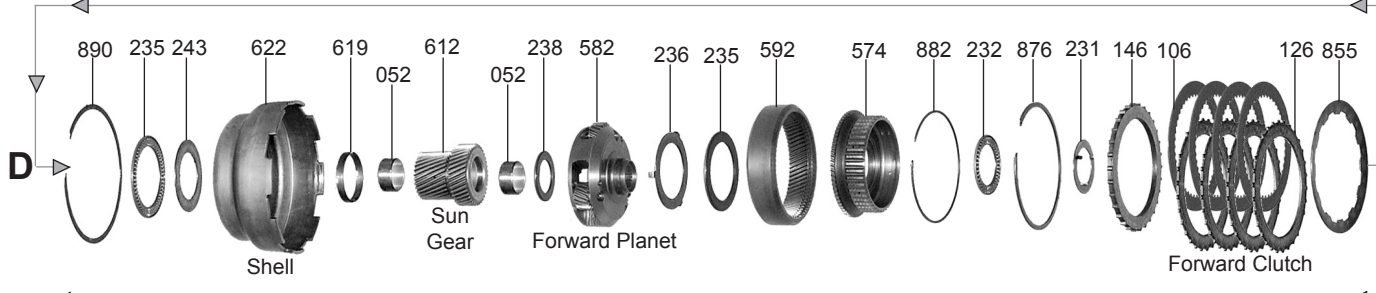
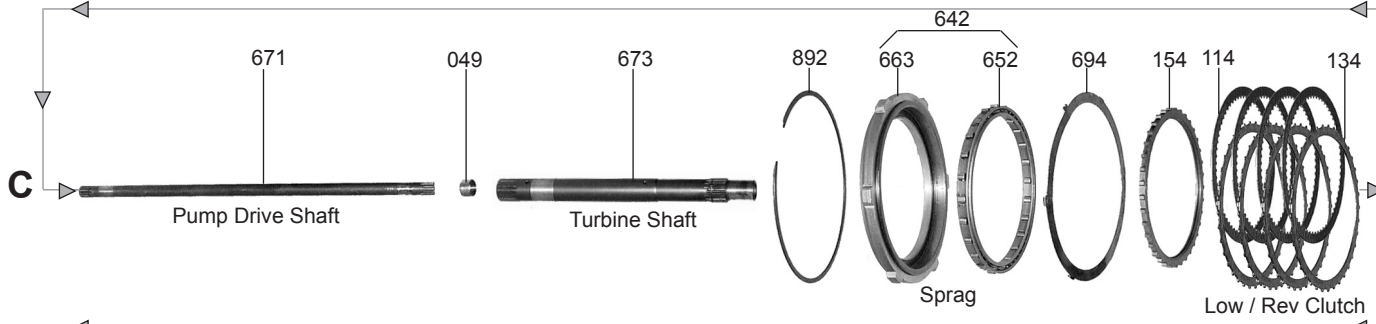
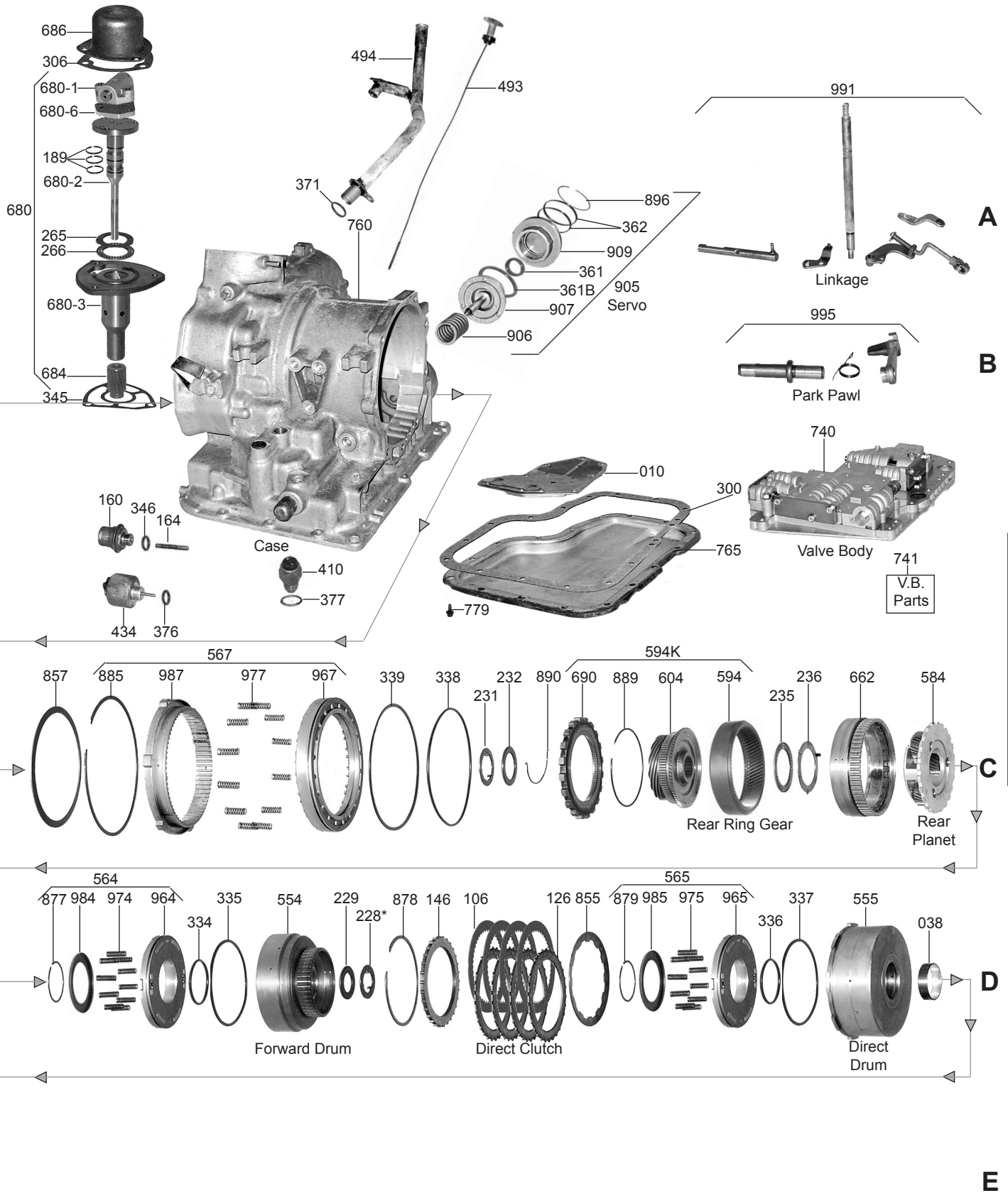


MAZDA





MAZDA

F3A



FWD 3 Speed

MAZDA

PART #	PAPER & RUBBER KIT	QTY.	REFERENCE #
18000.....	Paper & Rubber Kit, F3A 1981-Up	1	

PART #	OVERHAUL KITS	QTY.	REFERENCE #
18002.....	Overhaul Kit, F3A 1981-Up	1	

PART #	MASTER L/STEEL KIT	QTY.	REFERENCE #
18004.....	Master L/Steels Kit, F3A 1981-Up	1	

PART #	MASTER W/STEEL KIT	QTY.	REFERENCE #
18006.....	Master W/Steels Kit, F3A 1981-Up	1	

PART #	FILTER	QTY.	REFERENCE #
18010.....	Filter, F3A (GLC) 1981-87	1	FT01-19-815
18010A.....	Filter, F3A Isuzu (Deep Pan W/Out Tube) 1985-86.....	1	8-94413320-0
18010B.....	Filter, F3A (323 1981-89) (Tracer & Festiva 1987-89).....	1	FT21-19-8150
18010C.....	Filter, F3A Isuzu (Deep Pan With Tube) 1987-91 (Storm 1990-94)	1	8-94428489-0
18010D.....	Filter, F3A (Tracer & Festiva) 1989-93	1	E9BZ-7A098-A
18010E.....	Filter, F3A (Aspire) 1995-Up.....	1	F4BZ-7A098-A

PART #	FILTER KIT	QTY.	REFERENCE #
18011.....	Filter Kit, F3A (GLC) 1981-87.....	1	
18011A.....	Filter Kit, F3A Isuzu (Deep Pan W/Out Tube) 1985-86	1	
18011B.....	Filter Kit, F3A (323 1981-89) Tracer & Festiva 1987-89.....	1	
18011C.....	Filter Kit, F3A Isuzu (Deep Pan With Tube) 1987-91 (Storm 1990-94).....	1	
18011D.....	Filter Kit, F3A (Tracer & Festiva) 1989-93.....	1	
18011E.....	Filter Kit, F3A (Aspire) 1995-Up	1	

PART #	BANDS	QTY.	REFERENCE #
53022.....	Band, F3A (Flex)	1	0338-19-360B
53022H.....	Band, F3A (Hard)	1	

PART #	BUSHINGS	QTY.	REFERENCE #
18030.....	Bushing Kit, F3A 1981-Up.....	1	
18031.....	Bushing, F3A Converter Hub (1.418"OD)	1	
18031A.....	Bushing, F3A Converter Hub (1.457"OD)	1	
18032.....	Bushing, F3A Converter Reactor (Front).....	1	31337-X5000
18032A.....	Bushing, F3A Converter Reactor (Rear)	1	
18035.....	Bushing, F3A Inner Pump Gear	1	
18036.....	Bushing, F3A Stator To Turbine Shaft.....	1-2.....	31353-X5000
18037.....	Bushing, F3A Stator To Pump Shaft.....	1	
18038.....	Bushing, F3A Direct Drum.....	1	
18046.....	Bushing, F3A Direct Drum.....	1	31513-X5000
18052.....	Bushing, F3A Sun Gear	2	31462-X5000

PART #	METAL CLAD SEALS	QTY.	REFERENCE #
18070.....	Seal, F3A Front 1981-Up	1	FT01-19-223
42076A.....	Seal, F3A Both Axles (.395" Thick).....	2	FOO3-27-238A
18078.....	Seal, F3A Speed-O Housing	1	

PART #	FRICTION CLUTCH	QTY.	REFERENCE #
53100.....	Friction, F3A Forward & Direct Clutch (.063")	7-8.....	0338-19-500A
18106.....	Friction, F3A Forward & Direct Clutch (.063") (Use 53100)	7-8.....	0338-19-500A
18114.....	Friction, F3A Low/Reverse Clutch (.060")	4	FT01-19-610
18119.....	Friction Module, F3A	1	

PART #	STEEL CLUTCH	QTY.	REFERENCE #
18126.....	Steel, F3A Forward & Direct Clutch (.063").....	7	FT01-19-499
18134.....	Steel, F3A Low/Reverse Clutch (.059").....	5	FT01-19-609



FWD 3 Speed

F3A

PART #	CLUTCH PRESSURE PLATES	QTY.	REFERENCE #
53140A	Pressure Plate, F3A Forward & Direct Clutch (.190")	1	
53140B	Pressure Plate, F3A Forward & Direct Clutch (.197")	1	31567-FO600
53140C	Pressure Plate, F3A Forward & Direct Clutch (.205")	1	
53140D	Pressure Plate, F3A Forward & Direct Clutch (.213")	1	31537-FO620
53140E	Pressure Plate, F3A Forward & Direct Clutch (.220")	1	31567-X2903
53140F	Pressure Plate, F3A Forward & Direct Clutch (.228")	1	
53140G	Pressure Plate, F3A Forward & Direct Clutch (.236")	1	31567-X2905
53140H	Pressure Plate, F3A Forward & Direct Clutch (.244")	1	31667-XO503
53140J	Pressure Plate, F3A Forward & Direct Clutch (.265")	1	
53140L	Pressure Plate, F3A Forward & Direct Clutch (.295")	1	
18146	Pressure Plate, F3A Forward & Direct Clutch (Use 53140)	1	
18154	Pressure Plate, F3A Low/Reverse Clutch (.307")	1	FT01-19-618B
18154A	Pressure Plate, F3A Low/Reverse Clutch (.315")	1	FT01-19-617B
18154B	Pressure Plate, F3A Low/Reverse Clutch (.323")	1	FT01-19-613B
18154C	Pressure Plate, F3A Low/Reverse Clutch (.330")	1	FT01-19-614B
18154D	Pressure Plate, F3A Low/Reverse Clutch (.338")	1	FT01-19-615B
18154E	Pressure Plate, F3A Low/Reverse Clutch (.346")	1	FT01-19-616B

PART #	MODULATORS	QTY.	REFERENCE #
13160	Modulator, F3A (Non Adjustable)	1	
13160A	Modulator, F3A (Adjustable)	1	31938-X3100
18164	Modulator Pin, F3A (1.160" Long)	1	
18164A	Modulator Pin, F3A (1.180" Long)	1	
18164B	Modulator Pin, F3A (1.200" Long)	1	
18164C	Modulator Pin, F3A (1.220" Long)	1	
18164D	Modulator Pin, F3A (1.240" Long)	1	

PART #	OIL SEALING RINGS	QTY.	REFERENCE #
18175	Ring Kit, F3A 1981-Up	1	
53179	Ring, F3A Stator (Direct clutch) Metal	2	0338-19-256
53181	Ring, F3A Stator (Forward Clutch) Metal	2	0338-19-257
18185T	Ring, F3A Front Planet (Teflon) Some	1	
18189	Ring, F3A Governor (Metal)	3	FT01-19-6551
18189T	Ring, F3A Governor (Teflon)	3	

PART #	WASHERS & BEARINGS	QTY.	REFERENCE #
53211	Washer, F3A Stator To Direct Drum (1.50mm)	1	0338-19-646
53211A	Washer, F3A Stator To Direct Drum (1.70mm)	1	0338-19-647
53211B	Washer, F3A Stator To Direct Drum (1.90mm)	1	0338-19-641
53211C	Washer, F3A Stator To Direct Drum (2.10mm)	1	0338-19-642
53211D	Washer, F3A Stator To Direct Drum (2.30mm)	1	0338-19-643
53211E	Washer, F3A Stator To Direct Drum (2.50mm)	1	0338-19-644
53211F	Washer, F3A Stator To Direct Drum (2.70mm)	1	0338-19-645
18228AA	Race, F3A Stator To Forward Drum (3 Tab) (1.2mm)	1	FT01-19-621
18228BA	Race, F3A Stator To Forward Drum (3 Tab) (1.4mm)	1	FT01-19-632
18228CA	Race, F3A Stator To Forward Drum (3 Tab) (1.6mm)	1	FT01-19-633
18228DA	Race, F3A Stator To Forward Drum (3 Tab) (1.8mm)	1	FT01-19-634
18228EA	Race, F3A Stator To Forward Drum (3 Tab) (2.0mm)	1	FT01-19-635
18228FA	Race, F3A Stator To Forward Drum (3 Tab) (2.2mm)	1	FT01-19-636
18229	Bearing W/Race, F3A Stator To Forward Drum (1.373"OD)	1	
18229A	Bearing W/Race, F3A Stator To Forward Drum (1.647"OD)	1	
18231	Race, F3A Hub To Forward Drum (3 Tabs)	2	
18232	Bearing W/Race, F3A Forward Hub To Drum (Early)	2	
18232A	Bearing W/Race, F3A Forward Hub To Drum (Late) 1 Piece	2	
18235	Bearing W/Race, F3A Bowl To Rear Planet	3	
18236	Race, F3A Front Planet To Hub	2	
18238	Bearing W/Race, F3A Front Planet	1	
18243	Race, F3A Shell To Bearing	1	
18273	Cup Race, F3A Pinion & Idler	4	
18274	Bearing, F3A Pinion (Use 18282)	2	
18282	Bearing, F3A Idler Gear (Also Fits F3A Pinion Bearing #274)	2	94140699

MAZDA

PART #	GASKETS & RUBBER COMPONENTS	QTY.	REFERENCE #
18300	Gasket, F3A Bottom Pan	1	
18310	Gasket, F3A Pump Body To Case	1	FT01-19-221A

PART #	TECHNICAL MANUALS	QTY.	REFERENCE #
18400	Technical Manual, F3A	1	83-KF100TM

PART #	ELECTRICAL COMPONENTS	QTY.	REFERENCE #
18410	Switch, F3A Neutral Safety	1	
18414	Switch, F3A Inhibitor Switch	1	
18434	Solenoid, F3A Kickdown	1	

PART #	HARD PARTS	QTY.	REFERENCE #
18500	Pump, F3A Complete (Uses A 2 Tab Washer On Stator)	1	
18500A	Pump, F3A Complete (Uses A 3 Tab Washer On Stator)	1	
18510A	Pump Body W/Gears, F3A	1	
18520	Stator, F3A (2 Tab Washer Type)	1	
18520A	Stator, F3A (3 Tab Washer Type)	1	
18529A	Converter Reactor, F3A (2 Bushing) (2.325" Tall)	1	
18529AA	Converter Reactor, F3A (2 Bushing) (2.900" Tall) .926"ID At Converter Splines	1	
18529B	Converter Reactor, F3A (1 Bushing) (2.920" Tall) .850"ID At Converter Splines	1	
18529BA	Converter Reactor, F3A (1 Bushing) (2.920" Tall) .820"ID At Converter Splines	1	
18530	Pump Gears, F3A	1	
18543	Flange, F3A Pump Drive	1	
18554	Drum, F3A Forward (With 3 Holes For # 231) (Uses A 1.373"OD Bearing # 229) (2 1/2" Tall)	1	FT01-19-511
18554AA	Drum, F3A Forward (With 3 Holes For # 231) (Uses A 1.373"OD Bearing # 229) (2 5/8" Tall)	1	
18554AB	Drum, F3A Forward (With 1 Piece Bearing # 232) (Uses A 1.373"OD Bearing # 229) (2 5/8" Tall)	1	
18554B	Drum, F3A Forward (With 1 Piece Bearing # 232) (Uses A 1.647"OD Bearing # 229) (2 5/8" Tall)	1	
18554BA	Drum, F3A Forward (With 3 Holes For # 231) (Uses A 1.647"OD Bearing # 229) (2 5/8" Tall)	1	
18554BB	Drum, F3A Forward (With 1 Piece Bearing #232) (Uses A 1.647"OD Bearing # 229) (2 1/2" Tall)	1	
18554BC	Drum, F3A Forward (With 3 Holes For # 231) (Uses A 1.647"OD Bearing # 229) (2 1/2" Tall)	1	
18555A	Drum, F3A Direct Clutch	1	
18564	Piston Kit, F3A Forward Drum	1	
18565	Piston Kit, F3A Direct Drum	1	
18567	Piston Kit, F3A Low & Reverse Clutch	1	
18574	Hub, F3A Forward Clutch (Front Planet Ring Gear Hub)	1	
18582A	Planet, F3A Front (3 Gear) (1 Groove)	1	
18582AA	Planet, F3A Front (3 Gear) (No Groove)	1	FT01-19-540
18582B	Planet, F3A Front (4 Gear) (1 Groove)	1	
18584A	Planet, F3A Rear (1 Groove)	1	
18584AA	Planet, F3A Rear (No Groove)	1	
18592A	Ring Gear, F3A Front Planet (1 Groove)	1	
18592AA	Ring Gear, F3A Front Planet (No Groove)	1	FT01-19-533
18594AK	Ring Gear W/Hub, F3A Rear With Park Gear (1 Groove)	1	
18594AAK	Ring Gear W/Hub, F3A Rear With Park Gear (No Groove)	1	
18612A	Sun Gear, F3A (1 Groove) 2 1/16" Long	1	
18612AA	Sun Gear, F3A (No Groove) 2 1/16" Long	1	
18619A	Spacer, F3A Sungear (Fits A 1 Groove Sungear)	1	
18619AA	Spacer, F3A Sungear (Fits A No Groove Sungear)	1	
18622A	Shell, F3A Connecting (Fits A 1 Groove Sungear)	1	
18622AA	Shell, F3A Connecting (Fits A No Groove Sungear)	1	FT01-19-565

PART #	SPRAGS & ONE WAY CLUTCHES	QTY.	REFERENCE #
18642	Sprag Assembly, F3A (16 Segments) With Outer Race	1	
18642A	Sprag Assembly, F3A (24 Segments) With Outer Race	1	

MAZDA



FWD 3 Speed

F3A

PART #	HARD PARTS (Continued)	QTY.	REFERENCE #
18662	Inner Race, F3A Sprag	1	
18671	Pump Shaft, F3A (14 3/16" Long)	1	
18671A	Pump Shaft, F3A (13 1/2" Long)	1	
18673	Turbine Shaft, F3A (1 Bushing) 11" Long (With No Snap Ring Groove)	1	
18673A	Turbine Shaft, F3A (1 Bushing) 11" Long (With 1 Snap Ring Groove)	1	
18673AA	Turbine Shaft, F3A (1 Bushing) 10 1/2" Long (With Snap Ring Groove)	1	
18673B	Turbine Shaft, F3A (2 Bushing Type) 11" Long	1	
18673C	Turbine Shaft, F3A (2 Bushing Type) 11 1/8" Long	1	
18679	Shaft, F3A Idler Gear	1	
18680	Governor Assembly, F3A (15 Teeth) Cast Iron Shank	1	
18680A	Governor Assembly, F3A (15 Teeth) Aluminum Shank	1	
18686	Cover, F3A Governor	1	
18714K	Idler Gear W/Shaft, F3A (34 Teeth) 1.165" Wide (4.075"OD)	1	
18714CAK	Idler Gear W/Shaft, F3A (35 Teeth) 1.065" Wide (3.707"OD) (No Groove)	1	
18714CBK	Idler Gear W/Shaft, F3A (35 Teeth) 1.065" Wide (3.707"OD) (3 Groove)	1	
18714DK	Idler Gear W/Shaft, F3A (37 Teeth) .905" Wide (3.960"OD)	1	
18714DAK	Idler Gear W/Shaft, F3A (37 Teeth) 1.065" Wide (3.960"OD)	1	
18714DBK	Idler Gear W/Shaft, F3A (37 Teeth) 1.263" Wide (3.960"OD)	1	
18715A	Differential Assembly, F3A (67 Teeth) 1 1/8" Wide Gear	1	
18715B	Differential Assembly, F3A (69 Teeth) .870" Wide Gear	1	
18715BA	Differential Assembly, F3A (69 Teeth) 1 1/8" Wide Gear	1	
18715BB	Differential Assembly, F3A (69 Teeth) .960" Wide Gear (1 Groove)	1	
18715BC	Differential Assembly, F3A (69 Teeth) .960" Wide Gear (No Groove)	1	
18715C	Differential Assembly, F3A (71 Teeth) (4 Groove)	1	
18715D	Differential Assembly, F3A (65 Teeth) 1" Wide Gear	1	
18725A	Retainer, F3A Differential	1	
18730A	Pinion, F3A (Output Gear) 19 Teeth (1.240" Wide Gear) 2.455"OD	1	
18730B	Pinion, F3A (Output Gear) 19 Teeth (1.163" Wide Gear) 2.165"OD	1	
18730BA	Pinion, F3A (Output Gear) 19 Teeth (.980" Wide Gear) 2.170"OD	1	
18730C	Pinion, F3A (Output Gear) 20 Teeth (1.365" Wide Gear) 2.215"OD	1	
18730CA	Pinion, F3A (Output Gear) 19 Teeth (1.080" Wide Gear) 2.200"OD	1	
18730D	Pinion, F3A (Output Gear) 20 Teeth (1.135" Wide Gear) 2.445"OD	1	
18730E	Pinion, F3A (Output Gear) 22 Teeth (1.250" Wide Gear) 2.460"OD (3 Groove)	1	
18735	Idler Cover, F3A (Aluminum)	1	
18735A	Idler Cover, F3A (Cast Iron) (Uses A No Tab Washer)	1	
18735B	Idler Cover, F3A (Cast Iron) (Uses A 3 Tab Washer)	1	
18740	Valve Body, F3A (Non Lock-Up)	1	
18740A	Valve Body, F3A (Lock-Up)	1	

PART #	VALVE BODY COMPONENTS	QTY.	REFERENCE #
18741G-5	Check Ball, F3A Valve Body (.218") (Torton)	AR	

PART #	HARD PARTS (Continued)	QTY.	REFERENCE #
18750	Bell Housing, F3A (Top Bolts 3 5/8") 13 Bolts To Case	1	
18750A	Bell Housing, F3A (Top Bolts 5 1/8") 13 Bolts To Case	1	
18750B	Bell Housing, F3A (Top Bolts 6 1/4") 14 Bolts To Case	1	
18750C	Bell Housing, F3A (Top Bolts 6 1/4") 13 Bolts To Case	1	
18750D	Bell Housing, F3A (Top Bolts 5") 15 Bolts To Case	1	
18750E	Bell Housing, F3A (Top Bolts 2") GLC	1	
18750G	Bell Housing, F3A (Top Bolts 5 1/2") 323 & Tracer	1	
18750H	Bell Housing, F3A (Top Bolts 4 1/2") 626	1	
18750J	Bell Housing, F3A (Round Bell) 2 Studs For Mount (Storm)	1	
18750JA	Bell Housing, F3A (Round Bell) 1 Studs For Mount (Spectrum)	1	
18750L	Bell Housing, F3A (Top Bolts Are Offset) Festiva (No Differential Bearing Retainer)	1	
18760	Case, F3A (13 Bolts To Bell) With 2 Threaded Cable Bracket Holes On Top	1	
18760A	Case, F3A (13 Bolts To Bell) No Threaded Cable Bracket Holes	1	
18760B	Case, F3A (15 Bolts To Bell) No Threaded Cable Bracket Holes	1	
18760C	Case, F3A (15 Bolts To Case) With 2 Threaded Cable Bracket Holes On Top	1	
18765	Pan, F3A Bottom (.850" Deep At Deep End)	1	
18765A	Pan, F3A Bottom (1.380" Deep At Deep End)	1	
18765B	Pan, F3A Bottom (1.610" Deep At Deep End)	1	
18765C	Pan, F3A Bottom (2.500" Deep At Deep End)	1	
18765D	Pan, F3A Bottom (2.330" Deep At Deep End)	1	
18776K	Bolt Set, F3A Bell Housing To Case	1	
18777K	Bolt Set, F3A Pump Body To Case	1	
18778K	Bolt Set, F3A Stator To Pump Body	1	

MAZDA

PART #	HARD PARTS (Continued)	QTY.	REFERENCE #
18779K	Bolt Set, F3A Pan To Case	1	
18780K	Bolt Set, F3A Converter Reactor To Bell Housing	1	
18782K	Bolt Set, F3A Valve Body To Case	1	
18787K	Bolt Set, F3A Idler Cover To Bell	1	
18799	Nut, F3A Idler Shaft	1	
18848	Gear, F3A Driven Speed-O With Housing	1	
18855	Cushion, F3A Forward Clutch	1	
18857	Cushion, F3A Low/Reverse Clutch	1	
18876	Snap Ring, F3A Holds Pressure Plate In Forward Drum	1	
18877	Snap Ring, F3A Holds Forward Clutch Retainer In	1	
18878	Snap Ring, F3A Holds Pressure Plate In Direct Drum	1	
18879	Snap Ring, F3A Holds Direct Clutch Retainer In	1	
18882	Snap Ring, F3A Holds Forward Hub To Front Ring Gear	1	
18885	Snap Ring, F3A Holds Low/Reverse Clutch Hub In	1	
18890	Snap Ring, F3A Holds Rear Planet To Sprag Inner Race	1	
18892	Snap Ring, F3A Holds Sprag Assembly To Case	1	
18896	Snap Ring, F3A Holds Servo In Case	1	
18905	Servo Assembly, F3A	1	
18906	Spring, F3A Servo	1	
18907	Piston, F3A Servo	1	
18909	Cover, F3A Servo	1	
18916	Strut, F3A Band	1	
18964	Piston, F3A Forward Clutch	1	
18965	Piston, F3A Direct Clutch	1	
18967	Piston, F3A Low/Reverse Clutch	1	
18974	Spring, F3A Forward Clutch Return	1	
18975	Spring, F3A Direct Clutch Return	1	
18977	Spring, F3A Low/Reverse Clutch Return	1	
18984	Retainer, F3A Forward Clutch Spring	1	
18985	Retainer, F3A Direct Clutch Spring	1	
18987	Hub, F3A Low/Reverse Clutch	1	
18991	Linkage Assembly, F3A (Internal)	1	
18999	Lube Tube Set, F3A (2 Tubes)	1	

MAZDA

Technical Bulletin #638

A7RA

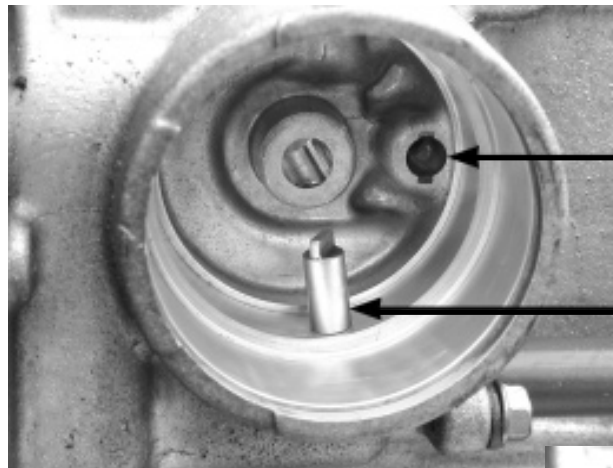
- Transmission: F3A
- Subject: Slips in 3rd/Reverse , no 3rd/ reverse, missing plug in servo bore
- Application: Ford Aspire

August 2001

F3A

Slips in 3rd/Reverse, No 3rd/Reverse, Missing Plug in Servo Bore

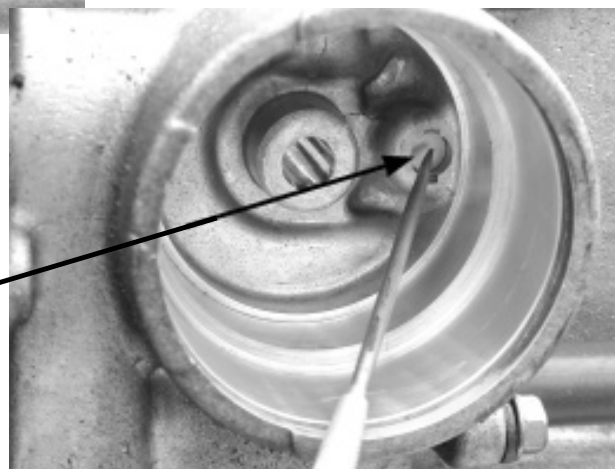
Ford Aspire vehicles with an F3A transmission have a steel plug in the case inside of the servo bore. This plug is staked in at the factory, and often falls out of it's hole when the servo is disassembled. If this plug falls out and the hole is not plugged, front clutch/servo release oil will be exhausted and the result is a 3rd/reverse slip, or no 3rd/reverse. It is not critical that this specific plug be reinstalled, but the hole must be plugged off.



— This hole must be plugged.

— Plug/Pin Approximate Plug Dimensions
 .313" Diameter
 .728" Overall Length
 .078" Flatted End Thickness

The factory installed the flatted end in first (The end that resembles a flat blade screw driver).



NOTE: This part is not serviced by Ford.

MAZDA